

Mandy Parkes

District Manager, Inland Empire Resource Conservation District



Mandy Parkes is the district manager of the Inland Empire Resource Conservation District (IERCD), a public agency headquartered in Redlands but providing open space preservation, habitat uplift, sustainable agriculture and forestry support, and facilitation of conservation education opportunities within 1,286 square miles of the upper Santa Ana River watershed. Mandy worked as a GIS analyst for six year prior to being hired as an IERCD project manager in 2008. In 2010, she was promoted to district manager where she oversees a staff of 17 and works under the direction of a seven-member Board of Directors appointed by the County of San Bernardino Board of Supervisors.

Mandy lives in Redlands with her husband and two children and when she is not working, loves to camp, hike, and spend time at the beach with her family.



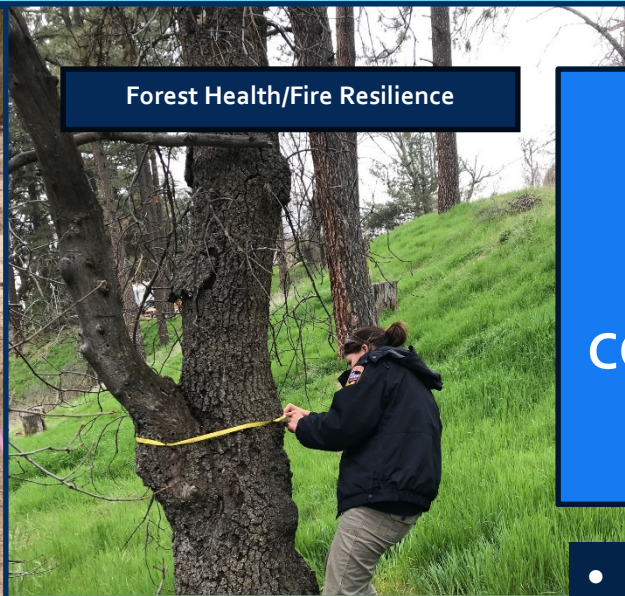
Inland Empire Resource
Conservation District Overview

*RivCo Recycles
Community Summit*





Habitat Restoration Work



Forest Health/Fire Resilience

INLAND EMPIRE RESOURCE CONSERVATION DISTRICT

- Public agency, governed by 7-member appointed board of directors
- 18-member bio, educational, technical, and admin staff carry out Board direction within service area

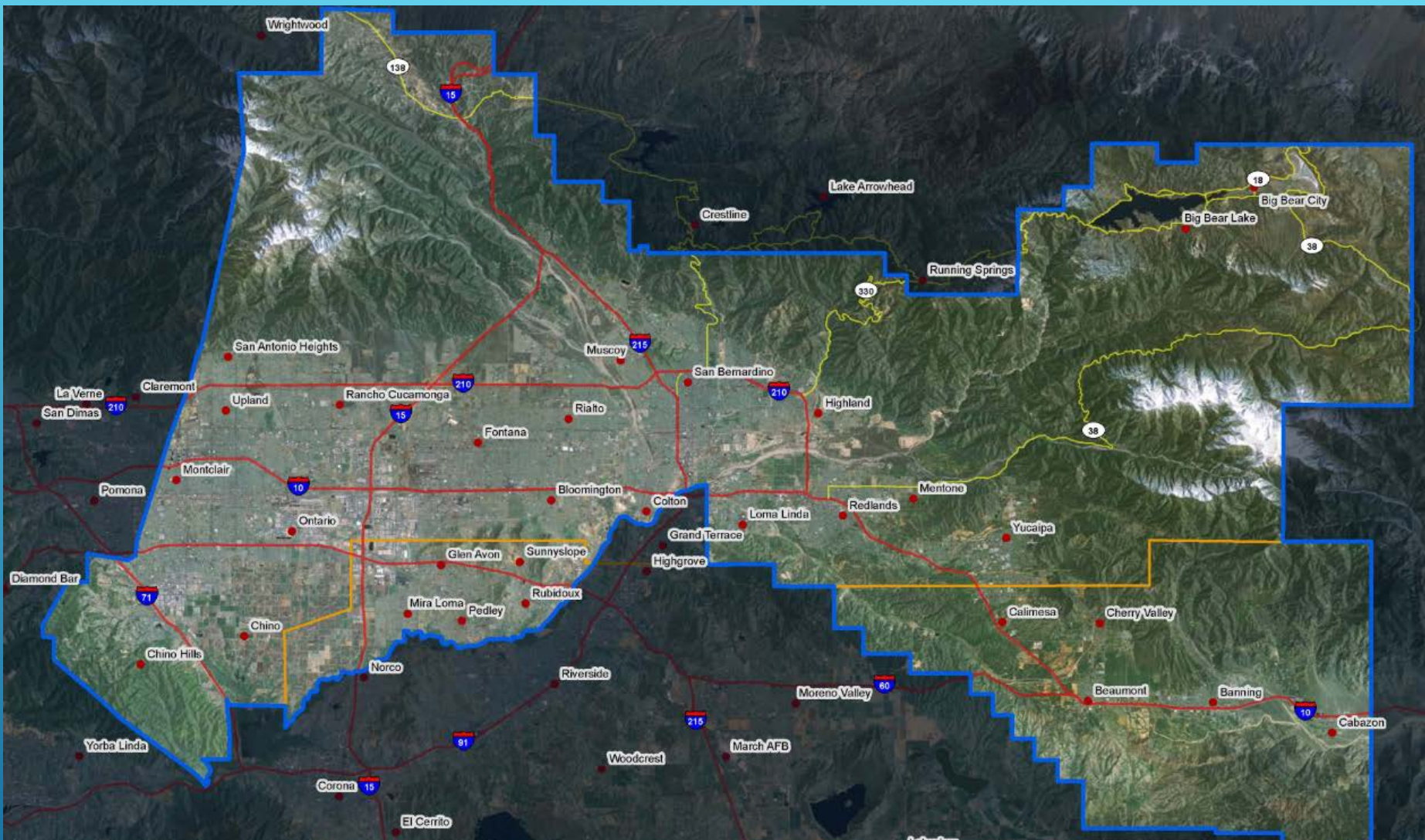


Sustainable Agriculture Support



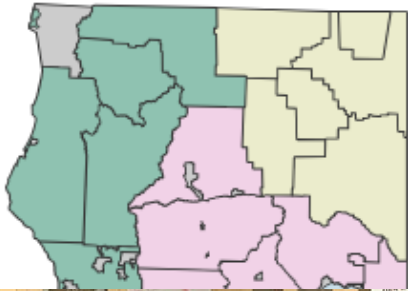
Conservation Ed – K-12 RRR Game

IERCD Board and staff focus on collaboration with Federal, state, and local entities to conduct habitat uplift, sustainable agriculture and forestry, and education and outreach programming within District boundaries.



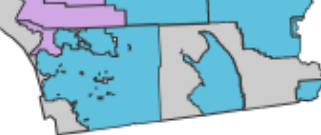
The purpose of the Inland Empire Resource Conservation District is to promote the understanding that **the quality of the environment determines the quality of life**. In cooperation with landowners, local, state and federal agencies, the agricultural community, environmental and community groups, we will promote good stewardship of our soil, water and other natural resources. We will provide strong education programs that will encourage today's youth to accept the responsibility of conserving our natural resources for tomorrow's generations. www.jerccd.org

California Resource Conservation Districts: Shared Foundations



RCD Regions

- BAY-DELTA
- CENTRAL COAST
- CENTRAL SIERRA
- HIGH DESERT
- MODOC PLATEAU
- NORTH COAST
- SACRAMENTO VALLEY
- SAN JOAQUIN VALLEY
- SOCAL INLAND
- SOUTHERN BAJA
- NO DISTRICT



IERCD Programming: Sustainable Ag



Virtual Food Preservation Workshop

PICKLING CUCUMBERS



University of California
Cooperative Extension

Master
Food
Preserver



Come to a **FREE** Master Food Preservers' class from the safety of your home and learn how to pickle vegetables. Your registration will include a kit with everything you need to get started at home while supplies last.

Register at the link above or via Facebook
Inland Empire Resource Conservation District

IERCD Programming: Forest Health/Fire Resilience



Above L: El Dorado Fire Resources Fair;
Above R: GSOB Monitoring; **Below L:** IERCD
Nursery Growing for Fire Restoration

IERCD Programming: : Special Projects Fund Program

IERCD Grant Program; run from 2015-16 through current year, budgeting and allocating funding competitively to projects within IERCD's mission, facilitated on properties in overlapping service areas.

2019-20 SPF Awards Supported: restoration/education conducted by RLC; outreach facilitated by UCCE – Master Gardeners/Food Preservers; New Farmer Training at HdV; pond restoration in Ford Park in the City of Redlands



TEMALPAKH: FROM THE EARTH

Maliki Museum's Ethnobotanical Garden, or Temalpakh, meaning From the Earth in Cahuilla, is home to a sprawling array of wonderfully useful plants. The plants that are located in this garden space have various uses including: food, housing, and medicine.

The garden was built and nurtured by dozens of volunteers in response to requests for information about how the tribes of Southern California used plants for sustainability. This unique garden acts as a living illustration to the book *Temalpakh: Cahuilla Indian Knowledge and Usage of Plants*, by Katherine Silva Saubel and Lowell Bean. The garden also acts as a living exhibit space that visitors and groups can explore during their visit to the museum. The garden was re-designed in 1994, and the new demonstration garden, covering roughly 1/4 of an acre, replaced a smaller garden. Many of the major plants used by the Cahuilla are represented. Other remarkable features of the garden include a massive collection of mortars and pestles displayed along the dry streambed, these tools represent the varying shapes and sizes used for different purposes. These mortars and pestles helped with processing the plants into different textures and sizes.

Maliki Museum hosts several programs that center around the garden and the rich information available about the plants that are growing here. The events that highlight native plants include: The Annual Agave Harvest and Roast (Mid-April), Black Oak Acorn Processing Workshops, Native Plants Lectures, and Boy Scout and Girl Scout badge earning visits to name a few. There are several groups and communities who benefit from the garden, most importantly the community of Morongo and neighboring tribes. The garden also acts as an example for other museums and organizations who are working to plan out their own native gardens. Luckily, all who are interested in native plants can see the garden and purchase books published by Maliki-Ballena Press that explore Southern California native plant information and which were authored primarily by Native Americans. These titles act as a guide to the surrounding ecosystem of plants that grow in the Southern California region and how these plants impacted the Native American peoples of the area.

While visiting the garden you will find the occasional visiting roadrunner and the amazing views of Mount San Jacinto to the south and Mount San Geronimo to the north. We hope you enjoy your time in the garden today.

Taxchehting'axpi' niyaxwe ximot piik.
We should heal ourselves with plants.

*'Achakwe' pichempinichitapi' niyaxwe
'imti' ximot'i'*
We are to treat all plants with kindness.

*Piik' emtekio' pi' enteyamawap
niyaxwe.*
When you come to them you have to explain your reasons.

*Piing' pi' pi' chapi' 'imih' ayaxwe
pi' en waw niyaxwe. All times.
And then you must only take some, not
all.*

Words from Katherine Saubel
*Tull Haxwax Wixatsh
A Divot Coyote's Tail*
By Katherine Silva Saubel
And Eric Elliott



IERCD
Programming:
Habitat Uplift



**Open Space
Conservation**

**Control of
Invasive
Vegetation**

**Sensitive
Species
Monitoring**

**Seed
Collection
/Container
Stock Planting**



IERCD Programming: Conservation Education



- K-12, Free, Standards-Based
- Google Slide presentations with companion activities
- Content retention assessment
- 2020-21 virtual conversion

Non-COVID
Programming: field trips,
demonstration gardens,
in-person presentations/
workshops; SLEWS



Looking Ahead: Contact Us to See How to Get Involved!



Saturday, January 11th
9:00 AM - 12:00 PM

*Volunteer at
our Native
Plant Nursery!*

RSVP to Crystal Valenzuela at
cvalenzuela@iercd.org or
909-283-7777

TELL US WHERE THE TRASH IS



Map trash points
around you.

All you need
is a smartphone.

1. Download the TrashOut app
2. Report trash points around you or update existing ones
3. Join us on World Cleanup Day to clean them up
4. Update them as cleaned



worldcleanupday.org/map-it

ASI & IERCD PRESENTS

*Let's Preserve at
Home: Pickling
Event*

Come join us to learn how to pickle
vegetables from the comfort of your home.

November 7, 2020
11 am - 1 pm

Zoom ID: 867 2181 6427
Passcode: Pickling



If you are in need of disability-related
accommodation to participate please
contact, asi-sustainability@csusb.edu



www.iercd.org
mparkes@iercd.org